



# TECHNOSCOPE F27

Throughout the history of cinema, the telescopic camera crane has been the foundation of some of the most stunning long takes and complex camera movements. The Filmotechnic Technoscope is a new series of ultra-lightweight and compact telescopic camera cranes, which are easy to deliver, assemble and operate in hard-to-reach places.

The Technoscope's smooth and quiet operation makes it perfect for indoor use. The Mitchell mount allows the telescopic boom to be mounted on any camera dolly or any other Mitchell mount platform. The crane can be powered by either battery or a 110V/220V power supply.

The Technoscope is the perfect crane to work with any lightweight remote head, making this technology more accessible than ever before.



## HIGHLIGHTS

- User-friendly interface
- Lightweight portable elements
- Long-lasting battery autonomy
- Compact in size and small footprint
- Assembled and ready for camera in less than 30'
- Stable base with pneumatic or track wheels
- Durable and state of the art carbon fiber design
- Arc compensation with our so-called 'Wall Mode'
- Telescoping hand control unit
- Comes standard with Raincover
- Adapter for Ronin and MōVI
- Battery powered
- Optional power supply unit available 110-60 DC
- Optional Electronic Nose Suspension

**filmotechnic**

## SPECIFICATIONS

Total Weight Crane 276kg / 608lbs  
Base Weight 66kg / 145lbs  
Leveling Jacks Weight 20.8kg / 46lbs  
Column Weight 52kg / 115lbs  
Arm Weight 112kg / 245lbs  
Max Nose Load 25kg / 55lbs

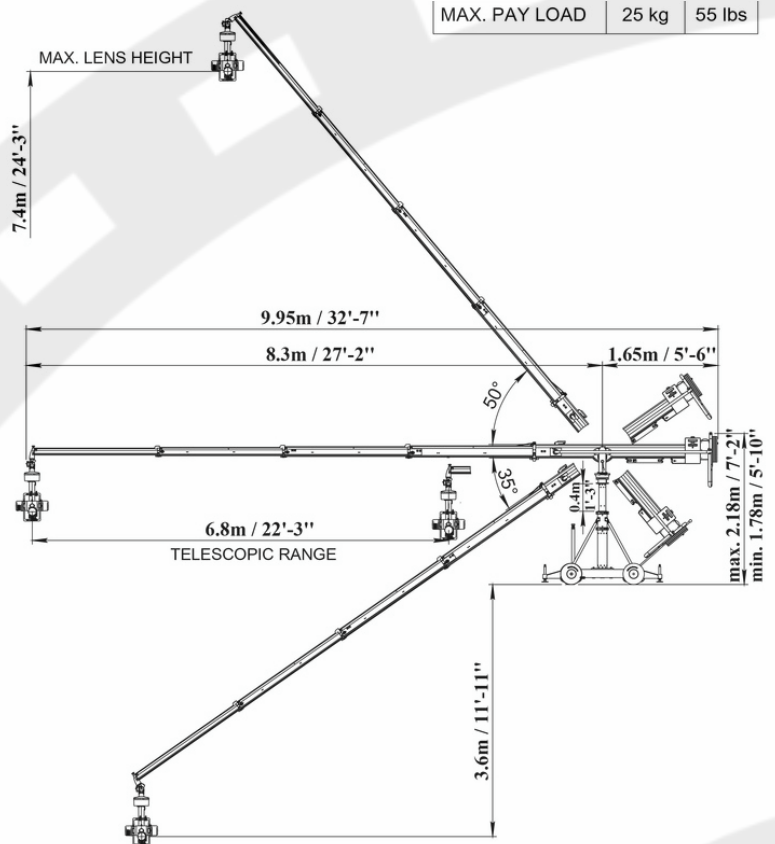
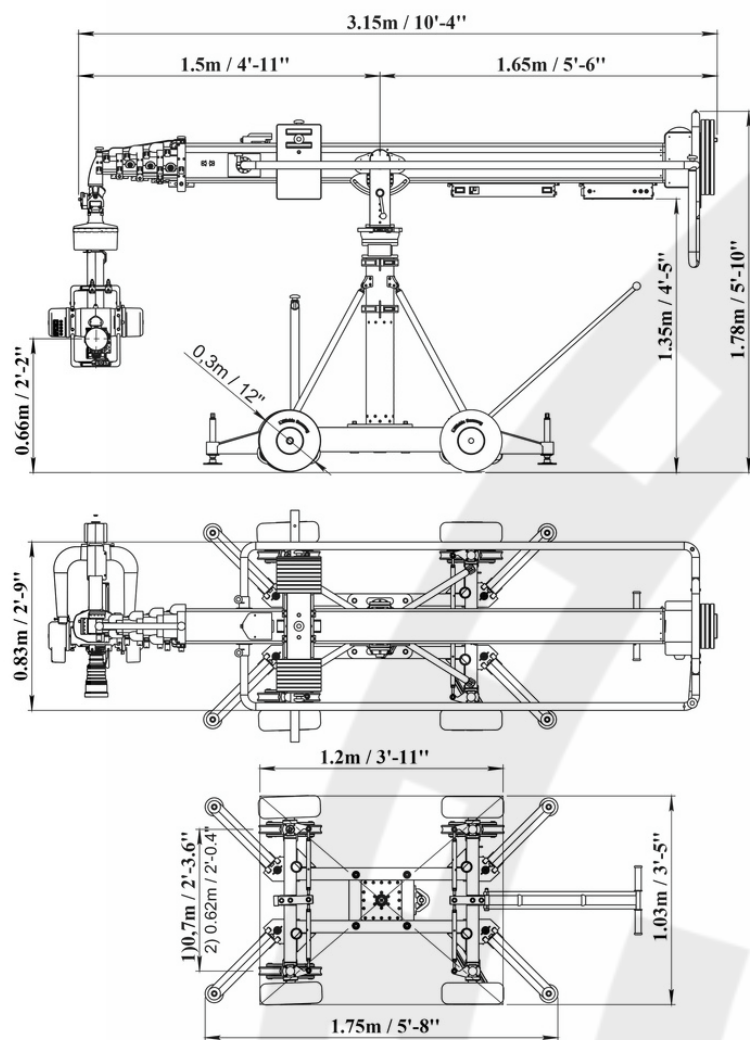
20 Counter Weights of 12kg / 26.5lbs  
2 Counter Weights of 6kg / 13lbs  
2 Counter Weights of 3kg / 6.6lbs  
2 Side Trim Weights 3.5kg / 7.7lbs  
2 Weight Carts

Max Lens Height 7.4m / 24' 3"  
Telescoping Range 6.8m / 22' 3"  
Telescoping Speed 2m/sec  
Min. Door Height 1.78m / 5' 10"

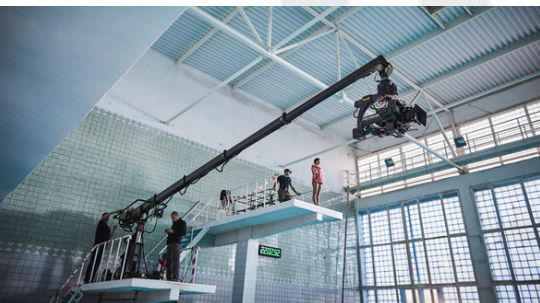
Operating Temp -20°C to +40°C

## POWER REQUIREMENTS

36-60 VDC



MAX. PAY LOAD	25 kg	55 lbs
---------------	-------	--------



***filmotechnic***

**USA** | +1 213 378 6636 | SALES@FILMOUSA.COM | WWW.FILMOUSA.COM

**EUROPE** | +31 6 47 23 48 20 | CONTACT@FILMOTECHNIC.SALE | WWW.FILMOTECHNIC.SALE

**CANADA** | +1 416 888 3160 | INFO@FILMOTECHNIC-CANADA.CA | WWW.FILMOTECHNIC-CANADA.CA